

# OCTOBER 4, 1962

B  
O  
L  
I  
V  
I  
A  
•  
1  
9  
6  
2



*Designer:*  
*Design Size:* 23 x 29 ½ mm  
*Producer:* La Papellera S. A., La Paz  
*Process:* lithography  
*Format:*  
*Pane Margins:*  
*Quantity:*  
*Paper:* white  
*Watermark:* none  
*Perforations:* 11½  
*Margins:* LA PAPELERA S. A. LA PAZ at bottom center  
*Purpose:* publicize the malaria eradication campaign  
*Sub-topics:* mosquito; designs #1 and #2  
*Notes:* 2,000 sets donated to WHO  
*Price:* A

**467, C245**

*Checklist:* unused \_\_ used \_\_ fdc \_\_ other \_\_\_\_



*Description:* overprinted MUESTRA (sample) vertically in black at right  
*Quantity:*  
*Notes:*  
*Price:* D

MUESTRA

**467, C245 SP**

*Checklist:* unused \_\_ other \_\_\_\_



*Description:* vertical pair from bottom of pane: bottom stamp has an uninked area at upper left  
*Quantity:*  
*Notes:*  
*Price:* D



**467 var**

*Checklist:* unused \_\_ other \_\_\_\_



OCTOBER 4, 1962

B  
O  
L  
I  
V  
I  
A

•

1  
9  
6  
2

# FIRST DAY CANCELLATIONS

	Size: 54 x 35 mm Notes: violet		Size: 54 x 35 mm Notes: blue
<b>LP-1</b> La Paz		<b>LP-2</b> La Paz	

B  
O  
L  
I  
V  
I  
A  
•  
1  
9  
6  
2

**FIRST DAY CANCELLATIONS**

**B  
O  
L  
I  
V  
I  
A**

**•**

**1  
9  
6  
2**

# FIRST DAY CACHETS

REPUBLICA DE BOLIVIA  
DIRECCION GENERAL DE CORREOS



DIA MUNDIAL DE LA SALUD  
PRIMER DIA DE CIRCULACION

Type: **BL-1**  
 Producer:  
 Size: 48 x 62 mm  
 Notes:

B  
O  
L  
I  
V  
I  
A  
•  
1  
9  
6  
2

**FIRST DAY CACHETS**

**B  
O  
L  
I  
V  
I  
A**

**•**

**1  
9  
6  
2**

# FIRST DAY USAGE

**BOLIVIA**

**1962**



*Cancel:* LP-1  
*Cacher:* BL-1  
*Size:* 164 x 94 mm  
*Notes:*  
*Price:* B

**1**

*Checklist:* \_\_



*Cancel:* LP-2  
*Cacher:* BL-1  
*Size:* 164 x 94 mm  
*Notes:*  
*Price:* B

**2**

*Checklist:* \_\_

**FIRST DAY USAGE**

**B  
O  
L  
I  
V  
I  
A**

**•**

**1  
9  
6  
2**

# OTHER USAGE

B  
O  
L  
I  
V  
I  
A  
•  
1  
9  
6  
2



Cancel: not legible  
Notes: 457 on postal use cover  
Price: B

**A**

Checklist: \_\_



Cancel: not legible  
Notes: C245 on postal use cover  
Price: B

**B**

Checklist: \_\_

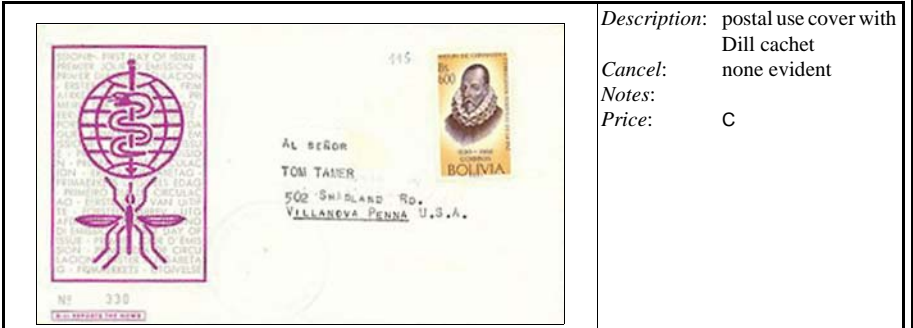
**OTHER USAGE**

**B  
O  
L  
I  
V  
I  
A**

**•**

**1  
9  
6  
2**

# RELATED MATERIAL



*Description:* postal use cover with  
Dill cachet  
*Cancel:* none evident  
*Notes:*  
*Price:* C

**RM1**

*Checklist:* \_\_

**B  
O  
L  
I  
V  
I  
A**

**•  
1  
9  
6  
2**

**RELATED MATERIAL**

**B  
O  
L  
I  
V  
I  
A**

**•**

**1  
9  
6  
2**