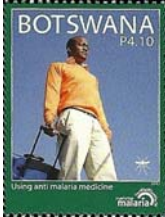
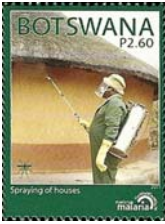


# October 25, 2011

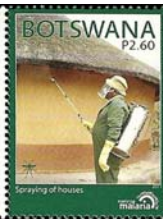
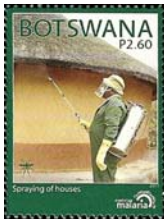
B  
O  
T  
S  
W  
A  
N  
A  
•  
2  
0  
1  
1



*Design Size:* 27¼ x 37 mm  
*Producer:* Ensheide, Holland  
*Process:* lithography  
*Format:* panes joined by vertical gutter  
*Selva:* producer's logo in black at left of bottom row; perforations through left, right and bottom  
  
*Quantity:*  
*Paper:* white  
*Watermark:*  
*Perforations:* 13½ x 14  
*Margins:* descriptive text at lower left; 2011 at lower right; logo at bottom right  
*Purpose:* promote malaria prevention  
*Sub-topics:* mosquito, sprayer  
*Notes:*  
*Price:* C

**922-925**

*Checklist:* unused \_\_\_ used \_\_\_ fdc \_\_\_ other \_\_\_



*Notes:* as above: gutter pairs  
*Price:* D

**922-925 gp**

*Checklist:* \_\_\_



# FIRST DAY CANCELLATIONS



Size: 28 mm

Notes:

**GB-1** *Gaborone*

B  
O  
T  
S  
W  
A  
N  
A  
•  
2  
0  
1  
2


**FIRST DAY CANCELLATIONS**

**B  
O  
T  
S  
W  
A  
N  
A**

**•**

**2  
0  
1  
2**

# FIRST DAY CACHETS

B  
O  
T  
S  
W  
A  
N  
A

•  
2  
0  
1  
2

**BOTSWANA**  
Malaria Free Botswana



Official First Day Cover



Type: **BT-1**  
Producer: post office  
Size: 200 x 90 mm  
Notes:

**FIRST DAY CACHETS**

**B  
O  
T  
S  
W  
A  
N  
A**

**•**

**2  
0  
1  
2**

# FIRST DAY USAGE



*Cancel:* GB-1  
*Cacher:* BT-1  
*Size:* 220 x 109 mm  
*Notes:*  
*Price:* C

1

*Checklist:* \_\_

B  
O  
T  
S  
W  
A  
N  
A

•

2  
0  
1  
2

**FIRST DAY USAGE**

**B  
O  
T  
S  
W  
A  
N  
A**

**•**

**2  
0  
1  
2**