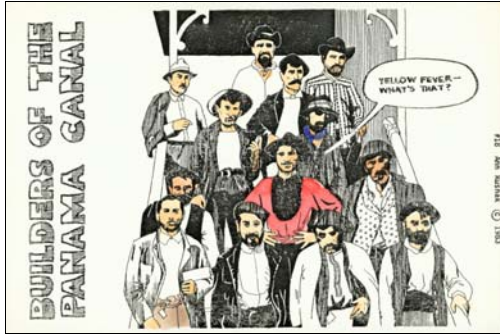
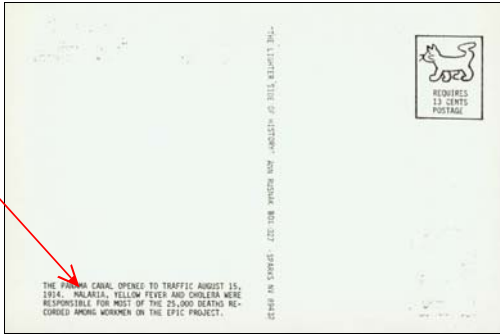


POSTCARD

CANAL ZONE • 1983



Cancel: unused
 Size: 153½ x 102 mm
 Notes: descriptive text on reverse cites malaria as one of the primary causes of death during construction of the canal; #18 in a 1983 series entitled "The Lighter Side of History" by Ann Ruskak of Sparks, Nevada
 Price: B



THE PANAMA CANAL OPENED TO TRAFFIC AUGUST 15, 1914. MALARIA, YELLOW FEVER AND CHOLERA WERE RESPONSIBLE FOR MOST OF THE 25,000 DEATHS RECORDED AMONG WORKMEN ON THE EPIC PROJECT.

1

Checklist: ___

POSTCARD

**C
A
N
A
L

Z
O
N
E**

•

**1
9
8
3**