

APRIL 14, 1962

FRANCE • 1962



Designer: Cottet
Design Size: 22 x 36 mm
Producer: State Printing Office, Paris
Process: engraved
Engraver: Cottet (designer)
Format: panes of 50 (10 x 5)
Sheet Margins: burlage in selvage above each stamp in row 1 and below each stamp in row 5; perforations extend through top and bottom selvage; one perforation in left and right selvage; printer number in black above 1.5; black control number above 1.10

Quantity: 5,995,000
Paper: white
Watermark: none
Perforations: 13
Margins: clear
Purpose: publicize the malaria eradication campaign
Sub-topics: swamp, WHO campaign design
Notes: numerous examples exist with varying amounts of blue ink in normally white areas; likely the result of over-inked portions of the printing plate, this ink appears as a light smudge

Price: A

1032

Checklist: unused __ used __ fdc __ other __



Description: margin single signed in selvage by designer
Quantity:
Notes:
Price: E

1032 signed

Checklist: __



Description: red printed double
Quantity: 1 reported
Notes: reported example is in vertical pair with normal

Price: G



1032 v1

Checklist: unused __ used __ fdc __ other __



Description: red under inked
Quantity: 1 reported
Notes:
Price: E



normal



variety

1032 v2

Checklist: unused __ used __ fdc __ other __

APRIL 14, 1962

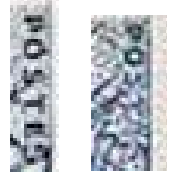
FRANCE

•

1962



Description: damaged POSTES at right (under o,50)
Quantity: 1 reported
Notes:
Price: E



normal variety

1032 v3

Checklist: unused __ used __ fdc __ other __



Description: imperforate
Quantity: 5,000
Notes: should be collected in pairs or margin singles
Price: D

1032 i

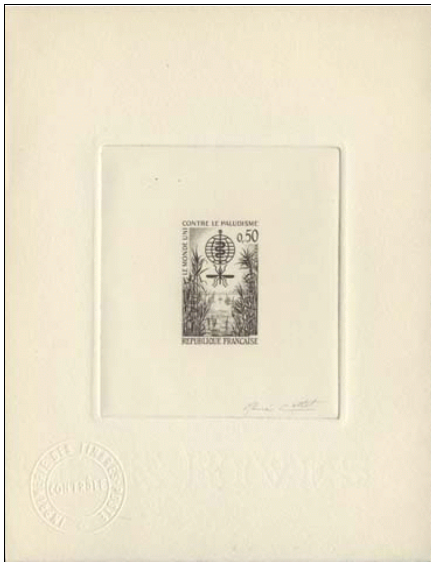
Checklist: unused __ used __ fdc __ other __



Description: trial color proof with marginal notation
Quantity:
Notes: printed on gummed white paper as used for final emission; nine 1-color impressions per row plus one 2-color impression in position 10; numerous colors and combinations exist
Price: C (1-color) D (2-color)

1032 cp

Checklist: __



Description: signed sepia artist's proof
Size: 126 x 163 mm
Quantity: about 20
Notes: printed on coarse, unwhitened card stock; seal embossed at lower left; also exists in black
Price: G

1032 AP

Checklist: __

APRIL 14, 1962

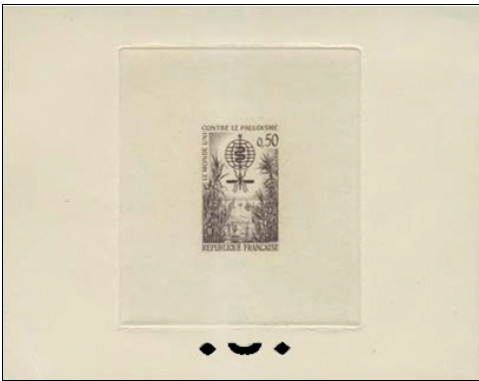
FRANCE • 1962



Description: deluxe sheet
Size: 130 x 100 mm
Quantity:
Notes: printed on ungummed white card stock
Price: E

1032 ds

Checklist: __



Description: sunken die proof in sepia
Size:
Quantity: 6-8
Notes: printed on coarse, unwhitened card stock
Price: G

1032 DP

Checklist: __

REPUBLICQUE FRANÇAISE
MINISTÈRE DES POSTES ET TÉLÉCOMMUNICATIONS

L'Administration des Postes et Télécommunications françaises met en vente, à partir du 14 avril 1962 à Paris et du 16 avril dans les autres bureaux, un timbre-poste consacré à la lutte contre le paludisme.

CARACTÉRISTIQUES DE CE TIMBRE

Valeur : 0,50 NF		Design et gravé en taille douce par GOTTST
1 bleu		Format : carré 22 x 26 (BREVET I. 0.)
Cachet : 1 rouge		
1 vert		
36 incisives à la taille		

Cent neuf États membres de l'Organisation Mondiale de la Santé investissent au cours de l'année 1962 un timbre pour appuyer la campagne d'éradication du paludisme dans le monde entier.

Le paludisme est encore fort répandu dans de nombreuses régions du globe puisqu'en à ce jour on y a plus d'un milliard de personnes qui y sont exposées, en particulier dans les zones tropicales et maritimes. Si le monde n'est pas conscientisé, s'il n'est éveillé par means diversifiés et distribués les populations touchées de nombreux pays étirés se sont encore assises dans leur ignorance de production. Le mal est répandu et les transformations indépendantes de contacts avec sa bactérie sont à sa production.

À la fin de l'année 1962, les administrations d'un million par dizaines les équipes d'ouvriers et d'ingénieurs qui s'efforcent d'éclaircir le sort de l'humanité. L'entreprise ne peut être menée à bien si l'investissement complet, par des moyens techniques employés à grande échelle, de la zone entière. Par le suite, la lutte contre le paludisme nécessite un effort massif, se réalisant par le quinze l'année l'invention du D.D.T. qui suffit, grâce à son effet de très longue durée, non plus de remède mais bien, son application rationnellement faite, la possibilité de déboucher une offensive efficace contre le moustique adulte, propagateur du paludisme.

L'Organisation Mondiale de la Santé, par ses chercheurs, ses équipes de médecins qui effectuent de pénétrer au plus profond des régions concernées, entend ainsi transporter une grande victoire pacifique : ne peut-elle pas présenter comme un bilan très favorable les résultats acquis en Europe? Alors qu'il y avait encore il y a peu très longtemps des zones réduites — au Portugal, en Espagne et surtout dans la vallée méditerranéenne de Chénab — l'année 1962 marque sans doute la disparition totale en Europe de la maladie. C'est un exemple en un encouragement pour les autres continents.

1962. — NF 11.

Description: post office bulletin with stamp design printed in black

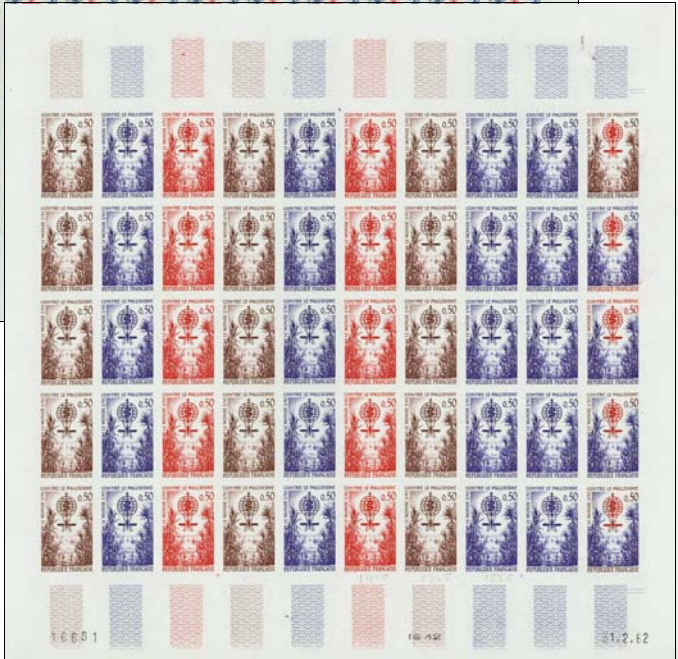
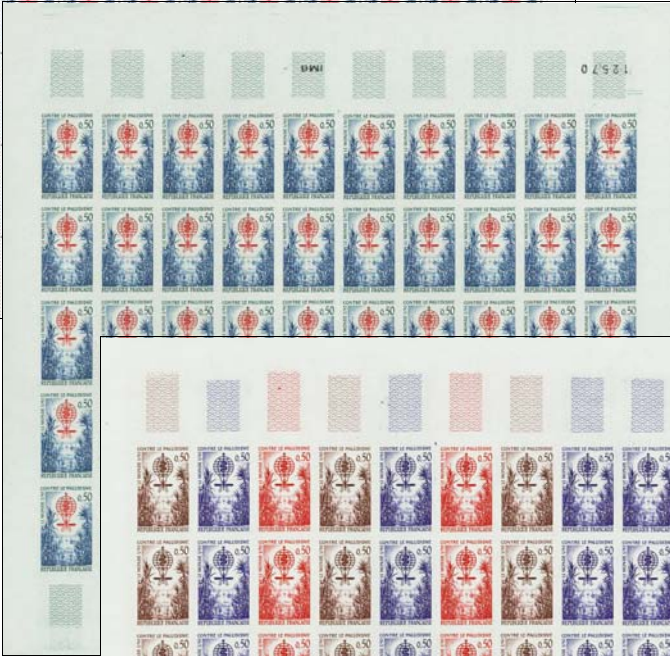
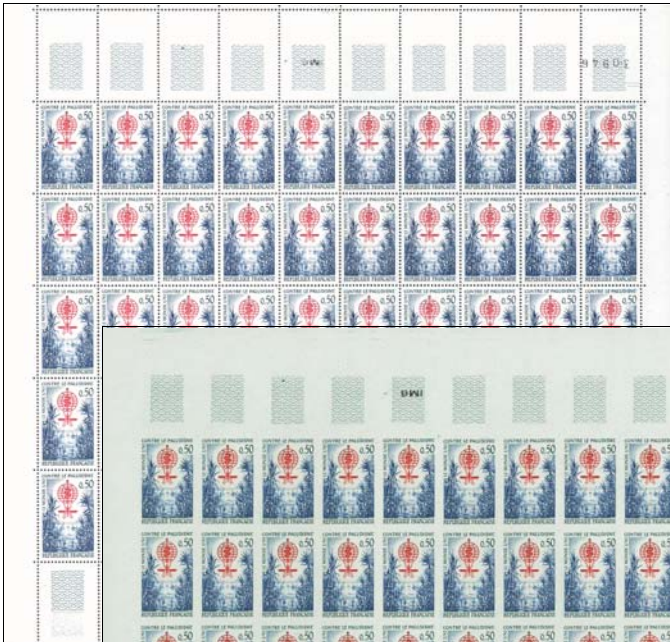
Size:
Quantity:
Notes:
Price: D

1032 Announcement

Checklist: __

APRIL 14, 1962

FRANCE
•
1962



Description: perforate and imperforate panes of 50 showing perforation pattern and marginal markings and inscriptions

Quantity: 119,900 perforate; 100 imperforate; - - trial color proof

Notes:

Price: E (perforate); J (imperforate); K (color proof)

FIRST DAY CANCELLATIONS



Size: 30 mm

Notes:

FRANCE

•

1962

PR-1 *Paris*

FIRST DAY CANCELLATIONS

**F
R
A
N
C
E**

•

**1
9
6
2**

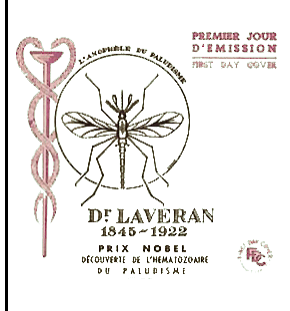
FIRST DAY CACHETS

FRANCE • 1962



Type: **FR-1**
 Producer: Modele
 Size: 78 x 84 mm
 Notes: small, pale blue logo at lower right

Type: **FR-2**
 Producer: Ceres
 Size: 100 x 83 mm
 Notes:



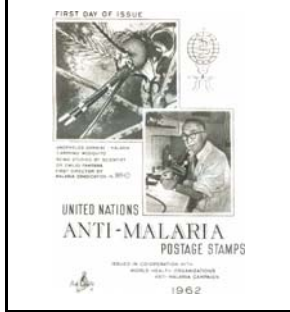
Type: **FR-3**
 Producer: Ceres
 Size: originally used for the 1954 Laveran stamp
 Notes:

Type: **FR-4**
 Producer: P.A.Cubells
 Size: 91 x 86 mm
 Notes:



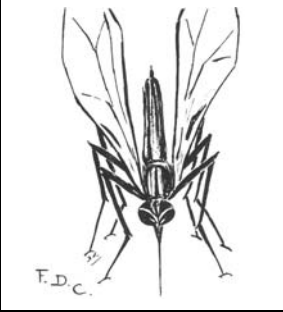
Type: **FR-5**
 Producer: P.A.Cubells
 Size:
 Notes:

Type: **FR-6**
 Producer: P.A.Cubells
 Size: 80 x 44 mm
 Notes:



Type: **FR-7**
 Producer: Art Craft
 Size: 55 x 81½
 Notes:

Type: **FR-8**
 Producer: T. D. C.
 Size:
 Notes: photocopy; color image not available



Type: **FR-9**
 Producer: France Specialists Club
 Size: 68 x 82 mm
 Notes:

Type: **FR-10**
 Producer:
 Size:
 Notes: handstamp



FIRST DAY CACHETS

**F
R
A
N
C
E**

•

**1
9
6
2**

FIRST DAY USAGE

FRANCE • 1962



Cancel: PR-1
 Cachet: FR-1
 Size: 163 x 92 mm
 Notes: descriptive text about malaria in French on reverse.
 Price: B

1

Checklist: __



Cancel: PR-1
 Cachet: FR-2
 Producer: Combiar Imprime Macon (CIM)
 Size: 164 x 91 mm
 Notes:
 Price: B

2

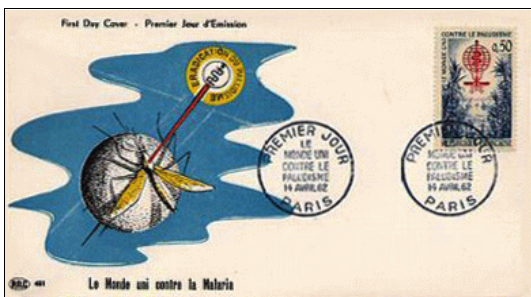
Checklist: __



Cancel: PR-1
 Cachet: FR-3
 Size: 165 x 93 mm
 Notes:
 Price: C

3

Checklist: __



Cancel: PR-1
 Cachet: FR-4
 Size: 164 x 92 mm
 Notes:
 Price: B

4

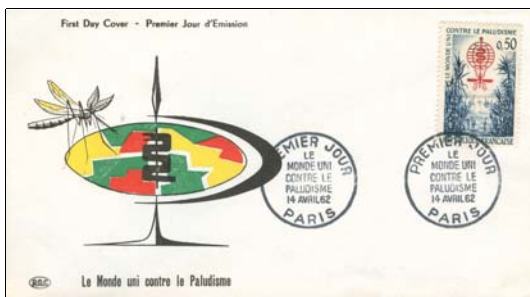
Checklist: __

9

FIRST DAY USAGE

FRANCE

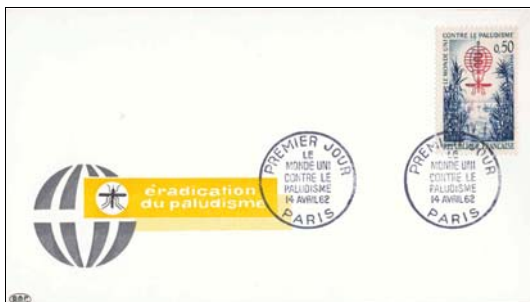
1962



Cancel: PR-1
 Cachet: FR-5
 Size: 165 x 91 mm
 Notes:
 Price: C

5

Checklist: __



Cancel: PR-1
 Cachet: FR-6
 Size: 165 x 93 mm
 Notes:
 Price: D

6

Checklist: __



Cancel: PR-1
 Cachet: FR-7
 Size: 165 x 93 mm
 Notes:
 Price: D

7

Checklist: __



Cancel: PR-1
 Cachet: FR-8
 Size: 164 x 92 mm
 Notes: photocopy: color image not available
 Price: E

8

Checklist: __

FIRST DAY USAGE

FRANCE

1962



Cancel: PR-1
 Cachet: FR-9
 Size:
 Notes:
 Price: E

9

Checklist: __



Cancel: PR-1
 Cachet: FR-10
 Size:
 Notes:
 Price: C

10

Checklist: __



Cancel: PR-1
 Notes: signed by stamp designer
 Price: E

11

Checklist: __



Cancel: PR-1
 Notes: addressed to Le Monde des Philatélistes; control number at lower left
 Price: C

12

Checklist: __

11

FIRST DAY USAGE

FRANCE

1962



Cancel: PR-1
Notes:
Price: C

13

Checklist: __



Cancel: PR-1
Cachet: maximum card 1
Producer: Combier
Size: 104 x 149 mm
Notes: examples exist with autograph of stamp designer at top
Price: C

14

Checklist: __



Cancel: PR-1
Cachet: maximum card 2
Producer: Bourgogne
Printer: Helio-Lorraine
Size: 145½ x 103½ mm
Notes:
Price: C

15

Checklist: __

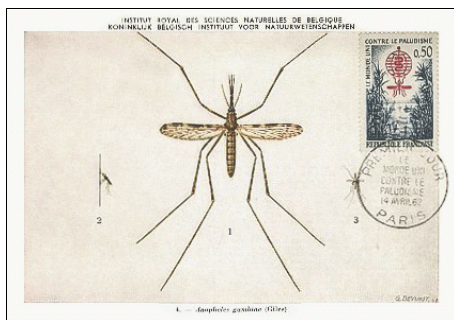


Cancel: PR-1
Cachet: maximum card 3
Producer: Combier
Size: 104½ x 149 mm
Notes:
Price: C

16

Checklist: __

FIRST DAY USAGE



Cancel: PR-1
Cacher: maximum card 4
Producer: Les Maximaphiles Français, Paris
Size: 148 x 115 mm
Notes: produced for the Royal Institute of Natural Sciences in Belgium, the card is #4 in a series featuring vectors in the Belgian Congo
Price: C

17

Checklist: __



Cancel: PR-1
Notes: corner block of 4 with first day cancel
Price: C

18

Checklist: __

F R A N C E • 1 9 6 2

FIRST DAY USAGE

**F
R
A
N
C
E**

•

**1
9
6
2**

OTHER USAGE

FRANCE • 1962



Cancel: Gaillard: April 24, 1962
Cacher: maximum card
Notes:
Price: C

A

Checklist: __



Cancel: Paris, May 31, 1962
Cacher: FR-2
Notes: special event cancel:
 Paris Philatelic Fair
Price: C



B

Checklist: __

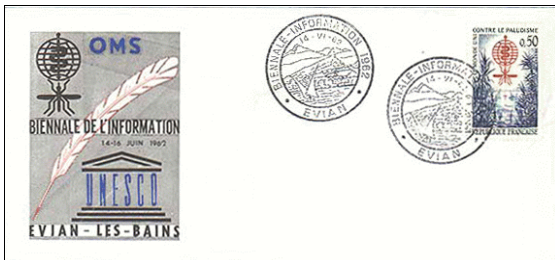


Cancel: Paris: June 2, 1962
Notes: special cancel: ESML;
 1032 with added values
 on postal use cover
Price: D



C

Checklist: __



Cancel: Evian-les-Bains, June 14, 1962
Cacher: UNESCO
Notes: special cancel: Evian
Price: C



D

Checklist: __

OTHER USAGE

FRANCE

1962



Cancel: Toul: August 19, 1962
Notes: on registered postal use cover
Price: C

E

Checklist: __



Cancel: May 1962
Notes: on postal use cover with National Savings Bank slogan cancel
Price: D

F

Checklist: __



Cancel: Strasbourg: July 16, 1962
Notes: with added value to make up registration rate on postal use cover
Price: C

G

Checklist: __



Cancel: Lyon Prefecture: April 16, 1962
Notes: on postal use cover
Price: B

H

Checklist: __

OTHER USAGE

FRANCE • 1962



6

7

8

9



2

3

4

5

Description: 4-fold advertising pamphlet from Houde Laboratories, Paris; pamphlet features images of malaria issues from several countries

Cancel: unidentifiable; applied to stamps prior to stamps being placed in folder

Notes: 1032 cancelled strip of 3 affixed inside left

Price: E

I

Checklist: __



J

Cancel: Sarreguemines: April 24, 1962

Notes: with added value and labels on postal use cover

Price: B

Checklist: __

17

OTHER USAGE

FRANCE

1962



Cancel: Paris: August 7, 1962
Notes: 1032 x 6 to pay express rate
Price: C

K

Checklist: __



Cancel: Sery: April 21, 1962
Notes: with added values; purple handstamp for Air France's April 24 Paris to Houston flight via Boeing 707
Price: C

L

Checklist: __



Cancel: Toul: April 21, 1962
Notes: pair and additional copy on reverse; handstamp for Paris - to - Houston flight (as above #L)
Price: D

M

Checklist: __



Cancel: Paris: April 28, 1962
Notes: with added value; flown via Air France "Caravelle" to Hanover and back
Price: C

N

Checklist: __

OTHER USAGE

FRANCE • 1962



Cancel: Paris: June 1, 1962
Notes: with slogan cancel:
 DENTAL HYGIENE IS THE
 WAY TO HEALTH
Price: C

O

Checklist: __



Cancel: Paris: August 12, 1962
Notes: slogan cancel: FOR PARIS
 USE THE DISTRICT
 NUMBER
Price: C

P

Checklist: __



Cancel: Brive-la-Gaillarde:
 December 1, 1962
Notes: special event cancel: birth
 bicentenary of
 entomologist Pierre A.
 Latreille
Price: C



Q

Checklist: __



Cancel: Maison Carree: April 12,
 1962
Notes: France #1032 and added
 value used in Algeria;
 machine cancel at top and
 hand cancel at bottom
Price: E

R

Checklist: __

OTHER USAGE

FRANCE • 1962



Cancel: Paris: April 22, 1963
Notes: on cacheted cover with cancel honoring French doctors and researchers
Price: C



S

Checklist: __



Cancel: Brest: March 16, 1963
Notes: on naval office cover with multiple handstamps: including French Navy, Official, Urgent, Secret
Price: D

T

Checklist: __



Cancel: - - - : May 3, 1962
Notes: with slogan cancel: Support Kangaroo Village
Price: C



U

Checklist: __

RELATED MATERIAL

FRANCE • 1962



Description: gold plated facsimile
Producer: "a professional philatelist" [as reported by vendor]
Process: electro plate
Quantity: 10
Notes: enclosed in sealed plastic; sold on delcampe.com by Philexor (from France)
Price: D

RM1

Checklist: __

GIBBONS STAMP MONTHLY
 PRICE NINEPENCE
 EDITOR: C. P. BASK
AN APPEAL -
 MAY we appeal to collectors who have material to sell. By selling to us you help others, for circulation is most important in the hobby.
YOU SELL - WE BUY - and in doing so thousands of other interested collectors will eventually benefit.
GENERAL or Specialized Collections are always required, but single rarities should not be overlooked.
WHATSOEVER you have to offer, write in the first 48 hours to our Chief Buyer who will, if necessary, visit you personally to value and make an offer for anything which interests us. Remember, we pay the highest price.
STANLEY GIBBONS LTD., 391 STRAND, LONDON, W.C.2.

CONTENTS

Source of the Month	Page	Through the Magnifying Glass	Page
All News in Brief	117	A New Queen's Printer for Colonial States?	122
St. Helena, September, 1962	118	50 Years of Air Age	126
Education and Postmarks, No. 1902	122	Commemorations	130
Postmark Catalogue of U.S.	125	Reviews	132
The "Star System", by Mr. Gordon Wright	128	Book Notes in Brief	132

PUBLISHED BY STANLEY GIBBONS LTD
 391 STRAND - LONDON - W.C.2

France, 1962

CZECHOSLOVAKIA
 1962 (10) 100, 150, 200, 250, 300, 350, 400, 450, 500, 550, 600, 650, 700, 750, 800, 850, 900, 950, 1000, 1050, 1100, 1150, 1200, 1250, 1300, 1350, 1400, 1450, 1500, 1550, 1600, 1650, 1700, 1750, 1800, 1850, 1900, 1950, 2000, 2050, 2100, 2150, 2200, 2250, 2300, 2350, 2400, 2450, 2500, 2550, 2600, 2650, 2700, 2750, 2800, 2850, 2900, 2950, 3000, 3050, 3100, 3150, 3200, 3250, 3300, 3350, 3400, 3450, 3500, 3550, 3600, 3650, 3700, 3750, 3800, 3850, 3900, 3950, 4000, 4050, 4100, 4150, 4200, 4250, 4300, 4350, 4400, 4450, 4500, 4550, 4600, 4650, 4700, 4750, 4800, 4850, 4900, 4950, 5000, 5050, 5100, 5150, 5200, 5250, 5300, 5350, 5400, 5450, 5500, 5550, 5600, 5650, 5700, 5750, 5800, 5850, 5900, 5950, 6000, 6050, 6100, 6150, 6200, 6250, 6300, 6350, 6400, 6450, 6500, 6550, 6600, 6650, 6700, 6750, 6800, 6850, 6900, 6950, 7000, 7050, 7100, 7150, 7200, 7250, 7300, 7350, 7400, 7450, 7500, 7550, 7600, 7650, 7700, 7750, 7800, 7850, 7900, 7950, 8000, 8050, 8100, 8150, 8200, 8250, 8300, 8350, 8400, 8450, 8500, 8550, 8600, 8650, 8700, 8750, 8800, 8850, 8900, 8950, 9000, 9050, 9100, 9150, 9200, 9250, 9300, 9350, 9400, 9450, 9500, 9550, 9600, 9650, 9700, 9750, 9800, 9850, 9900, 9950, 10000, 10050, 10100, 10150, 10200, 10250, 10300, 10350, 10400, 10450, 10500, 10550, 10600, 10650, 10700, 10750, 10800, 10850, 10900, 10950, 11000, 11050, 11100, 11150, 11200, 11250, 11300, 11350, 11400, 11450, 11500, 11550, 11600, 11650, 11700, 11750, 11800, 11850, 11900, 11950, 12000, 12050, 12100, 12150, 12200, 12250, 12300, 12350, 12400, 12450, 12500, 12550, 12600, 12650, 12700, 12750, 12800, 12850, 12900, 12950, 13000, 13050, 13100, 13150, 13200, 13250, 13300, 13350, 13400, 13450, 13500, 13550, 13600, 13650, 13700, 13750, 13800, 13850, 13900, 13950, 14000, 14050, 14100, 14150, 14200, 14250, 14300, 14350, 14400, 14450, 14500, 14550, 14600, 14650, 14700, 14750, 14800, 14850, 14900, 14950, 15000, 15050, 15100, 15150, 15200, 15250, 15300, 15350, 15400, 15450, 15500, 15550, 15600, 15650, 15700, 15750, 15800, 15850, 15900, 15950, 16000, 16050, 16100, 16150, 16200, 16250, 16300, 16350, 16400, 16450, 16500, 16550, 16600, 16650, 16700, 16750, 16800, 16850, 16900, 16950, 17000, 17050, 17100, 17150, 17200, 17250, 17300, 17350, 17400, 17450, 17500, 17550, 17600, 17650, 17700, 17750, 17800, 17850, 17900, 17950, 18000, 18050, 18100, 18150, 18200, 18250, 18300, 18350, 18400, 18450, 18500, 18550, 18600, 18650, 18700, 18750, 18800, 18850, 18900, 18950, 19000, 19050, 19100, 19150, 19200, 19250, 19300, 19350, 19400, 19450, 19500, 19550, 19600, 19650, 19700, 19750, 19800, 19850, 19900, 19950, 20000, 20050, 20100, 20150, 20200, 20250, 20300, 20350, 20400, 20450, 20500, 20550, 20600, 20650, 20700, 20750, 20800, 20850, 20900, 20950, 21000, 21050, 21100, 21150, 21200, 21250, 21300, 21350, 21400, 21450, 21500, 21550, 21600, 21650, 21700, 21750, 21800, 21850, 21900, 21950, 22000, 22050, 22100, 22150, 22200, 22250, 22300, 22350, 22400, 22450, 22500, 22550, 22600, 22650, 22700, 22750, 22800, 22850, 22900, 22950, 23000, 23050, 23100, 23150, 23200, 23250, 23300, 23350, 23400, 23450, 23500, 23550, 23600, 23650, 23700, 23750, 23800, 23850, 23900, 23950, 24000, 24050, 24100, 24150, 24200, 24250, 24300, 24350, 24400, 24450, 24500, 24550, 24600, 24650, 24700, 24750, 24800, 24850, 24900, 24950, 25000, 25050, 25100, 25150, 25200, 25250, 25300, 25350, 25400, 25450, 25500, 25550, 25600, 25650, 25700, 25750, 25800, 25850, 25900, 25950, 26000, 26050, 26100, 26150, 26200, 26250, 26300, 26350, 26400, 26450, 26500, 26550, 26600, 26650, 26700, 26750, 26800, 26850, 26900, 26950, 27000, 27050, 27100, 27150, 27200, 27250, 27300, 27350, 27400, 27450, 27500, 27550, 27600, 27650, 27700, 27750, 27800, 27850, 27900, 27950, 28000, 28050, 28100, 28150, 28200, 28250, 28300, 28350, 28400, 28450, 28500, 28550, 28600, 28650, 28700, 28750, 28800, 28850, 28900, 28950, 29000, 29050, 29100, 29150, 29200, 29250, 29300, 29350, 29400, 29450, 29500, 29550, 29600, 29650, 29700, 29750, 29800, 29850, 29900, 29950, 30000, 30050, 30100, 30150, 30200, 30250, 30300, 30350, 30400, 30450, 30500, 30550, 30600, 30650, 30700, 30750, 30800, 30850, 30900, 30950, 31000, 31050, 31100, 31150, 31200, 31250, 31300, 31350, 31400, 31450, 31500, 31550, 31600, 31650, 31700, 31750, 31800, 31850, 31900, 31950, 32000, 32050, 32100, 32150, 32200, 32250, 32300, 32350, 32400, 32450, 32500, 32550, 32600, 32650, 32700, 32750, 32800, 32850, 32900, 32950, 33000, 33050, 33100, 33150, 33200, 33250, 33300, 33350, 33400, 33450, 33500, 33550, 33600, 33650, 33700, 33750, 33800, 33850, 33900, 33950, 34000, 34050, 34100, 34150, 34200, 34250, 34300, 34350, 34400, 34450, 34500, 34550, 34600, 34650, 34700, 34750, 34800, 34850, 34900, 34950, 35000, 35050, 35100, 35150, 35200, 35250, 35300, 35350, 35400, 35450, 35500, 35550, 35600, 35650, 35700, 35750, 35800, 35850, 35900, 35950, 36000, 36050, 36100, 36150, 36200, 36250, 36300, 36350, 36400, 36450, 36500, 36550, 36600, 36650, 36700, 36750, 36800, 36850, 36900, 36950, 37000, 37050, 37100, 37150, 37200, 37250, 37300, 37350, 37400, 37450, 37500, 37550, 37600, 37650, 37700, 37750, 37800, 37850, 37900, 37950, 38000, 38050, 38100, 38150, 38200, 38250, 38300, 38350, 38400, 38450, 38500, 38550, 38600, 38650, 38700, 38750, 38800, 38850, 38900, 38950, 39000, 39050, 39100, 39150, 39200, 39250, 39300, 39350, 39400, 39450, 39500, 39550, 39600, 39650, 39700, 39750, 39800, 39850, 39900, 39950, 40000, 40050, 40100, 40150, 40200, 40250, 40300, 40350, 40400, 40450, 40500, 40550, 40600, 40650, 40700, 40750, 40800, 40850, 40900, 40950, 41000, 41050, 41100, 41150, 41200, 41250, 41300, 41350, 41400, 41450, 41500, 41550, 41600, 41650, 41700, 41750, 41800, 41850, 41900, 41950, 42000, 42050, 42100, 42150, 42200, 42250, 42300, 42350, 42400, 42450, 42500, 42550, 42600, 42650, 42700, 42750, 42800, 42850, 42900, 42950, 43000, 43050, 43100, 43150, 43200, 43250, 43300, 43350, 43400, 43450, 43500, 43550, 43600, 43650, 43700, 43750, 43800, 43850, 43900, 43950, 44000, 44050, 44100, 44150, 44200, 44250, 44300, 44350, 44400, 44450, 44500, 44550, 44600, 44650, 44700, 44750, 44800, 44850, 44900, 44950, 45000, 45050, 45100, 45150, 45200, 45250, 45300, 45350, 45400, 45450, 45500, 45550, 45600, 45650, 45700, 45750, 45800, 45850, 45900, 45950, 46000, 46050, 46100, 46150, 46200, 46250, 46300, 46350, 46400, 46450, 46500, 46550, 46600, 46650, 46700, 46750, 46800, 46850, 46900, 46950, 47000, 47050, 47100, 47150, 47200, 47250, 47300, 47350, 47400, 47450, 47500, 47550, 47600, 47650, 47700, 47750, 47800, 47850, 47900, 47950, 48000, 48050, 48100, 48150, 48200, 48250, 48300, 48350, 48400, 48450, 48500, 48550, 48600, 48650, 48700, 48750, 48800, 48850, 48900, 48950, 49000, 49050, 49100, 49150, 49200, 49250, 49300, 49350, 49400, 49450, 49500, 49550, 49600, 49650, 49700, 49750, 49800, 49850, 49900, 49950, 50000, 50050, 50100, 50150, 50200, 50250, 50300, 50350, 50400, 50450, 50500, 50550, 50600, 50650, 50700, 50750, 50800, 50850, 50900, 50950, 51000, 51050, 51100, 51150, 51200, 51250, 51300, 51350, 51400, 51450, 51500, 51550, 51600, 51650, 51700, 51750, 51800, 51850, 51900, 51950, 52000, 52050, 52100, 52150, 52200, 52250, 52300, 52350, 52400, 52450, 52500, 52550, 52600, 52650, 52700, 52750, 52800, 52850, 52900, 52950, 53000, 53050, 53100, 53150, 53200, 53250, 53300, 53350, 53400, 53450, 53500, 53550, 53600, 53650, 53700, 53750, 53800, 53850, 53900, 53950, 54000, 54050, 54100, 54150, 54200, 54250, 54300, 54350, 54400, 54450, 54500, 54550, 54600, 54650, 54700, 54750, 54800, 54850, 54900, 54950, 55000, 55050, 55100, 55150, 55200, 55250, 55300, 55350, 55400, 55450, 55500, 55550, 55600, 55650, 55700, 55750, 55800, 55850, 55900, 55950, 56000, 56050, 56100, 56150, 56200, 56250, 56300, 56350, 56400, 56450, 56500, 56550, 56600, 56650, 56700, 56750, 56800, 56850, 56900, 56950, 57000, 57050, 57100, 57150, 57200, 57250, 57300, 57350, 57400, 57450, 57500, 57550, 57600, 57650, 57700, 57750, 57800, 57850, 57900, 57950, 58000, 58050, 58100, 58150, 58200, 58250, 58300, 58350, 58400, 58450, 58500, 58550, 58600, 58650, 58700, 58750, 58800, 58850, 58900, 58950, 59000, 59050, 59100, 59150, 59200, 59250, 59300, 59350, 59400, 59450, 59500, 59550, 59600, 59650, 59700, 59750, 59800, 59850, 59900, 59950, 60000, 60050, 60100, 60150, 60200, 60250, 60300, 60350, 60400, 60450, 60500, 60550, 60600, 60650, 60700, 60750, 60800, 60850, 60900, 60950, 61000, 61050, 61100, 61150, 61200, 61250, 61300, 61350, 61400, 61450, 61500, 61550, 61600, 61650, 61700, 61750, 61800, 61850, 61900, 61950, 62000, 62050, 62100, 62150, 62200, 62250, 62300, 62350, 62400, 62450, 62500, 62550, 62600, 62650, 62700, 62750, 62800, 62850, 62900, 62950, 63000, 63050, 63100, 63150, 63200, 63250, 63300, 63350, 63400, 63450, 63500, 63550, 63600, 63650, 63700, 63750, 63800, 63850, 63900, 63950, 64000, 64050, 64100, 64150, 64200, 64250, 64300, 64350, 64400, 64450, 64500, 64550, 64600, 64650, 64700, 64750, 64800, 64850, 64900, 64950, 65000, 65050, 65100, 65150, 65200, 65250, 65300, 65350, 65400, 65450, 65500, 65550, 65600, 65650, 65700, 65750, 65800, 65850, 65900, 65950, 66000, 66050, 66100, 66150, 66200, 66250, 66300, 66350, 66400, 66450, 66500, 66550, 66600, 66650, 66700, 66750, 66800, 66850, 66900, 66950, 67000, 67050, 67100, 67150, 67200, 67250, 67300, 67350, 67400, 67450, 67500, 67550, 67600, 67650, 67700, 67750, 67800, 67850, 67900, 67950, 68000, 68050, 68100, 68150, 68200, 68250, 68300, 68350, 68400, 68450, 68500, 68550, 68600, 68650, 68700, 68750, 68800, 68850, 68900, 68950, 69000, 69050, 69100, 69150, 69200, 69250, 69300, 69350, 69400, 69450, 69500, 69550, 69600, 69650, 69700, 69750, 69800, 69850, 69900, 69950, 70000, 70050, 70100, 70150, 70200, 70250, 70300, 70350, 70400, 70450, 70500, 70550, 70600, 70650, 70700, 70750, 70800, 70850, 70900, 70950, 71000, 71050, 71100, 71150, 71200, 71250, 71300, 71350, 71400, 71450, 71500, 71550, 71600, 71650, 71700, 71750, 71800, 71850, 71900, 71950, 72000, 72050, 72100, 72150, 72200, 72250, 72300, 72350, 72400, 72450, 72500, 72550, 72600, 72650, 72700, 72750, 72800, 72850, 72900, 72950, 73000, 73050, 73100, 73150, 73200, 73250, 73300, 73350, 73400, 73450, 73500, 73550, 73600, 73650, 73700, 73750, 73800, 73850, 73900, 73950, 74000, 74050, 74100, 74150, 74200, 74250, 74300, 74350, 74400, 74450, 74500, 74550, 74600, 74650, 74700, 74750, 74800, 74850, 74900, 74950, 75000, 75050, 75100, 75150, 75200, 75250, 75300, 75350, 75400, 75450, 75500, 75550, 75600, 75650, 75700, 75750, 75800, 75850, 75900, 75950, 76000, 76050, 76100, 76150, 76200, 76250, 76300, 76350, 76400, 76450, 76500, 76550, 76600, 76650, 76700, 76750, 76800, 76850, 76900, 76950, 77000, 77050, 77100, 77150, 77200, 77250, 77300, 77350, 77400, 77450, 77500, 77550, 77600, 77650, 77700, 77750, 77800, 77850, 77900, 77950, 78000, 78050, 78100, 78150, 78200, 78250, 78300, 78350, 78400, 78450, 78500, 78550, 78600, 78650, 78700, 78750, 78800, 78850, 78900, 78950, 79000, 79050, 79100, 79150, 79200, 79250, 79300, 79350, 79400, 79450, 79500, 79550, 79600, 79650, 79700, 79750, 79800, 79850, 79900, 79950, 80000, 80050, 80100, 80150, 80200, 80250, 80300, 80350, 80400, 80450, 80500, 80550, 80600, 80650, 80700, 80750, 80800, 80850, 80900, 80950, 81000, 81050, 81100, 81150, 81200, 81250, 81300, 81350, 81400, 81450, 81500, 81550, 81600, 81650, 81700, 81

RELATED MATERIAL

**F
R
A
N
C
E**

•

**1
9
6
2**