

APRIL 24, 1962

S
W
A
Z
I
L
A
N
D
•
1
9
6
2



Design Size: 23 x 33 mm
Producer: John Enshede and Sons
Process: photogravure
Format: panes of 50 (10 x 5)
Pane Margins: JON. ENSHEDÉ EN ZONEN - HOLLAND in background color reading bottom to top at left; registration mark above 1.6; perforations through selvage on all sides

Quantity:
Paper: white
Watermark: multiple crown and CA spiral: sideways

Perforations: 13 x 14
Margins: clear
Purpose: publicize the malaria eradication campaign
Sub-topics: mosquito
Notes: part of a 16-stamp definitive set
Price: A

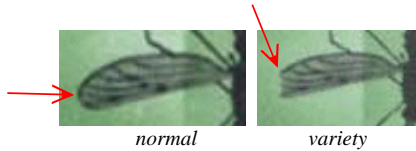


103

Checklist: unused __ used __ fdc __ other ____



Description: "clipped wing": constant plate flaw at position 4.3
Quantity: 1 per pane
Notes:
Price: E

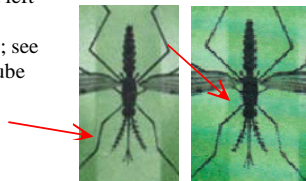


103a

Checklist: unused __ used __ fdc __ other ____



Description: mosquito shifted left at least 50
Quantity:
Notes: legs enter cameo; see position on testtube
Price: D



103 var

Checklist: unused __ used __ fdc __ other ____

APRIL 24, 1962

S
W
A
Z
I
L
A
N
D

•

1
9
6
2

FIRST DAY CANCELLATIONS

**S
W
A
Z
I
L
A
N
D**

•

**1
9
6
2**

FIRST DAY CACHETS

S
W
A
Z
I
L
A
N
D
•
1
9
6
2

First Day of Issue

Type: **SW-1**
 Producer: post office
 Size: 57 x 8 mm
 Notes: hand stamped on all first day covers

Type: **SW-2**
 Producer: C. George Junior III
 Size: 48 x 80 mm
 Notes:



MBABANE. SWAZILAND

Type: **SW-3**
 Producer: post office
 Size: 45 x 3 mm
 Notes: hand stamped

Type: **SW-4**
 Producer: post office
 Size: 20½ x 3 mm
 Notes: hand stamped

MBABANE

MBABANE
MBABANE

Type: **SW-5**
 Producer: post office
 Size:
 Notes: hand stamped

Type: **SW-6**
 Producer: post office
 Size:
 Notes:

FDC
24 - IV - 1962



Type: **SW-7**
 Producer: ACE
 Size: 69 x 65 mm
 Notes:

FIRST DAY CACHETS

**S
W
A
Z
I
L
A
N
D**

•

**1
9
6
2**

FIRST DAY USAGE

S
W
A
Z
I
L
A
N
D
•
1
9
6
2



Cancel: MB-1
Cacher: SW-1
Size:
Notes: complete 16-stamp set
Price: E

1

Checklist: __



Cancel: MB-1
Cacher: SW-1
Size:
Notes: low values from set
Price: E

2

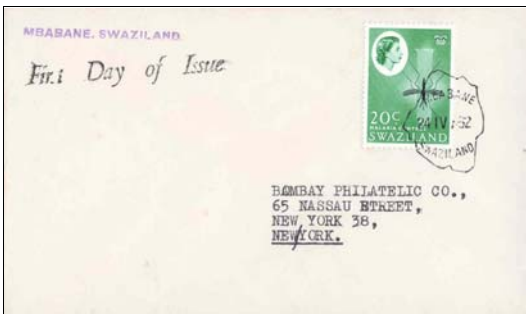
Checklist: __



Cancel: MB-1
Cacher: SW-1 and SW-2
Size:
Notes:
Price: D

3

Checklist: __



Cancel: MB-1
Cacher: SW-1 and SW-3
Size:
Notes:
Price: C

4

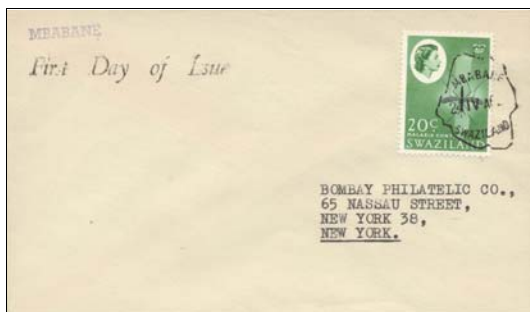
Checklist: __

7

FIRST DAY USAGE

S
W
A
Z
I
L
A
N
D

1
9
6
2



Cancel: MB-1
Cachet: SW-1 and SW-4
Size:
Notes:
Price: C

5

Checklist: ____



Cancel: MB-1
Cachet: SW-1 and SW-5
Size:
Notes:
Price: C

6

Checklist: ____



Cancel: MB-1
Cachet: SW-7
Size: 264 x 214 mm
Notes: complete 16-stamp set
Price: E

7

Checklist: ____



Cancel: ST-1
Cachet: SW-6
Size:
Notes:
Price: E

8

Checklist: ____

OTHER USAGE



Cancel: Mbabane: May 10, 1962
 Notes: with added values from
 issue on postal use cover
 Price: C

A

Checklist: ___

S
W
A
Z
I
L
A
N
D
•
1
9
6
2

OTHER USAGE

**S
W
A
Z
I
L
A
N
D**

•

**1
9
6
2**

RELATED MATERIAL

S W A Z I L A N D • 1 9 6 2

JUNE 1962 PRICE NINEPENCE

GIBBONS STAMP MONTHLY

EDITED BY C. F. BARR

AN APPEAL -

MAY we appeal to collectors who have material to sell. By selling to us you help others, for circulation is most important in the hobby.

YOU SELL—WE BUY—and in doing so thousands of other interested collectors will eventually benefit.

GENERAL or Specialized Collections are always required, but single rarities should not be overlooked.

WHATEVER you have to offer, write in the first instance to our Chief Buyer who will, if necessary, visit you personally to view and make an offer for anything which interests us. Remember, we pay the highest prices.

STANLEY GIBBONS LTD., 391 STRAND, LONDON, W.C.2.

VOL. 38	CONTENTS	Nos. 16
Index of Advertisers	111	111
All Stars in Blue	112	112
St. Helena, Antiquities, 1961	114	114
Sweden and Norway, 1961	122	122
Holland's Catalogue of 1961	130	130
The "Blue Ribbon", by St. Gordon Wright	131	131
	Through the Progressing Class	132
	A New Quality of Service for Customer Services	133
	For Artists of All Ages	134
	Commemorations	135
	Reviews	136
	Special Notes in Brief	137

PUBLISHED BY STANLEY GIBBONS LTD
20, STRAND - LONDON - W.C.2

1962, 1961

Gibbons' Catalogue Supplement—continued

PAPUA AND NEW GUINEA

RHODESIA & NYASALAND

SWAZILAND

ST. HELENA

SIERRA LEONE

SWAZILAND

AUTRIA

REPUBLIC OF CONGO

BELGIUM

BULGARIA

NEW PRINTINGS

Part II EUROPE & COLONIES

3 CT.

Continued on page 11

Description: listing for the issue in *Gibbons Stamp Monthly*; June 1962

Notes: red border added

Price: B

RM1	<i>Checklist:</i> ___

RELATED MATERIAL

**S
W
A
Z
I
L
A
N
D**

•

**1
9
6
2**